

WiFi on the Road

Carolyn McHale
For SETFC Rally
September 2008



Questions and Answers

- What is WiFi?
- How does WiFi work?
- Why do you need WiFi?
- How do you use WiFi?

What is WiFi?

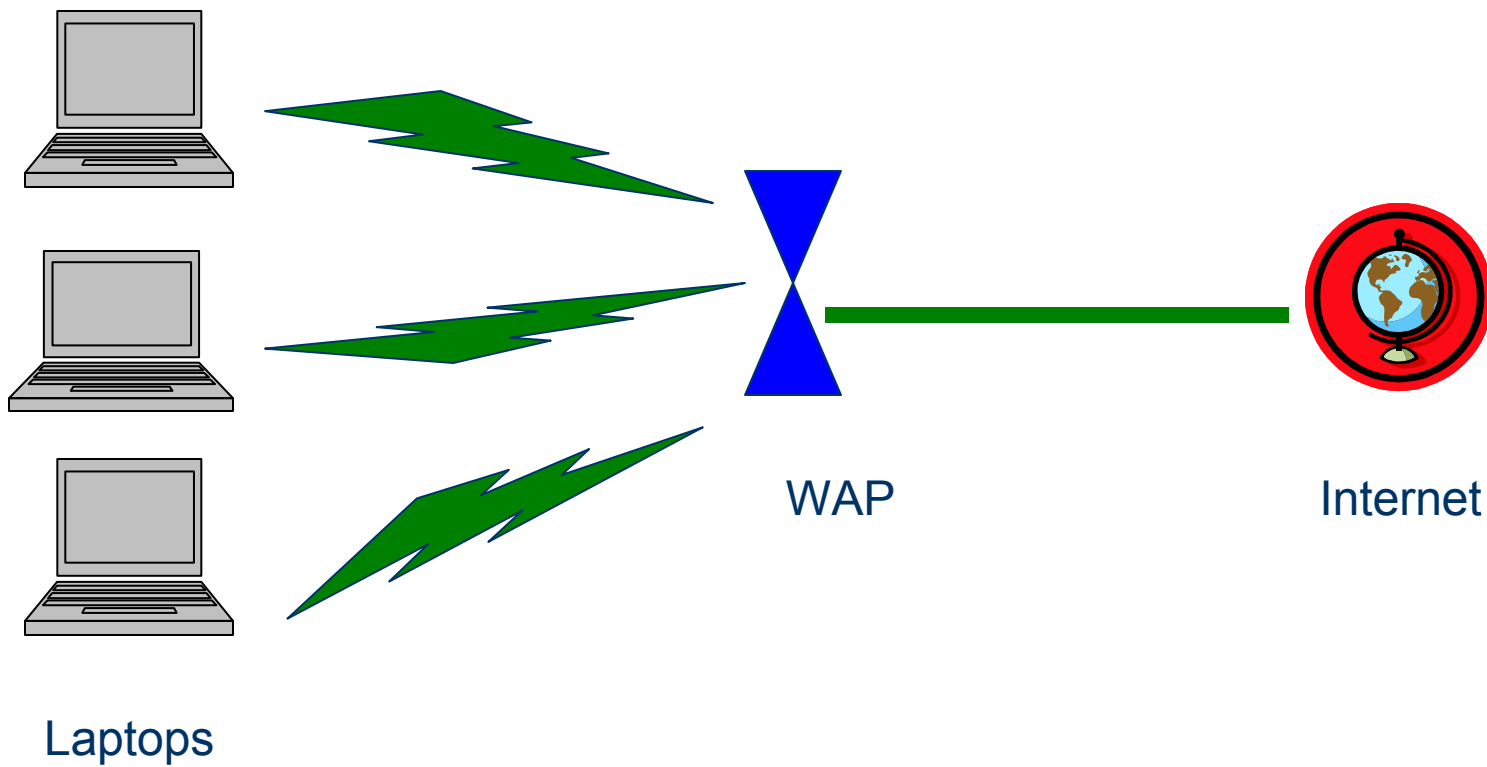
- WiFi – **Wi**reless **Fi**delity Ethernet protocol/standard allows connection to the Internet

What is WiFi - Equipment

WiFi connects you to the Internet via:

- Wireless access point (WAP)
- Cell phone/air card
- Cable
- Satellite

How does WiFi Work?



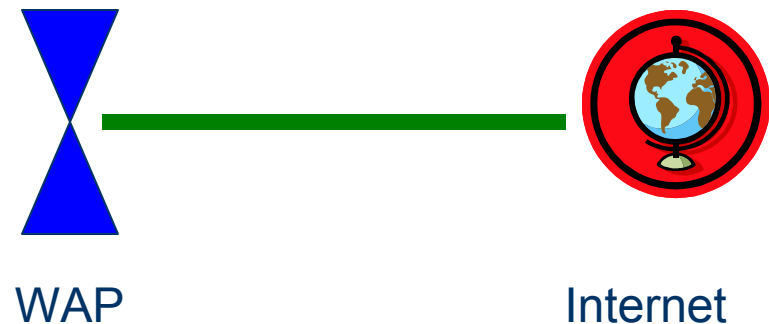
How does WiFi Work? Router to Internet

- Under control and security of the campground, library, hotspot, RV, etc
- Cell phone or air card connection
- Cable, e.g. Comcast
- Satellite



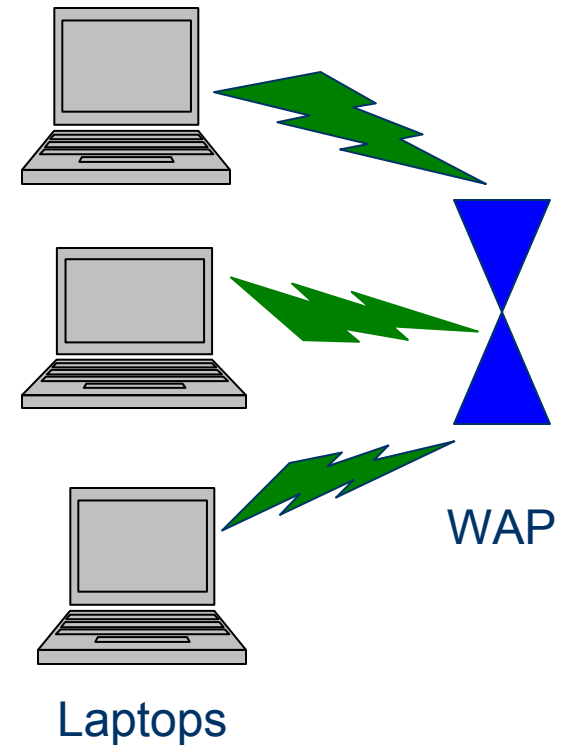
How does WiFi Work? Router to Internet

- Hotspots can be at Flying J, MacDonalds, Starbucks, libraries, Texas rest stops, etc
- Campgrounds can have hotspots at one central location or distributed around campground
- Fellow RVer with an aircard or satellite connection
- Hotspots are free or have a cost



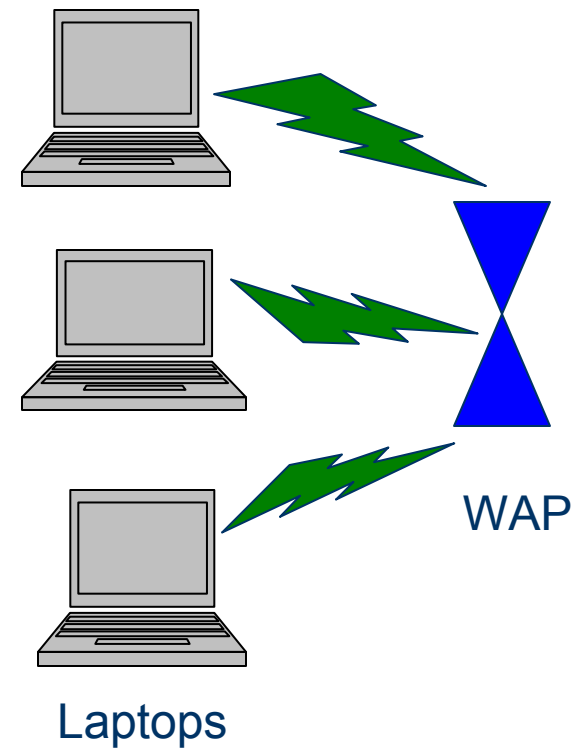
How does WiFi Work? Laptop to WAP

- WAP broadcasts signal
- Laptop searches for WiFi signal
- Laptop connects to signal
- User enters a password if required; or pays online



How does WiFi Work? Laptop to WAP

- Signal appears strong
- Laptop is connected to WAP
- Can't access the Internet...



How Does WiFi Work – Signal Strength

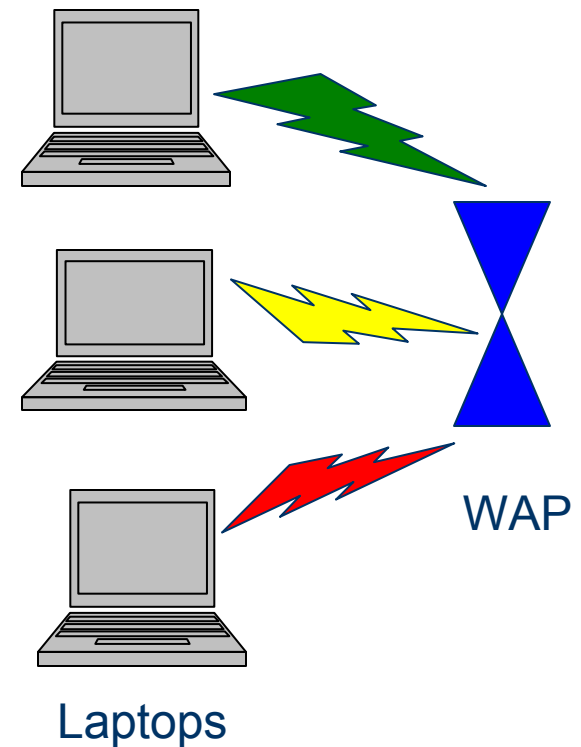
- Signals can be either strong or weak
- Laptops will have difficult time connecting to a weak signal
- Distance from WAP is directly related to strength of signal
- Structure blocking signal - move laptop closer or to another part of RV or move the RV

How Does WiFi Work – Signal Strength

- WAP radiates about 100 meters
- Range varies depending whether indoor or outdoor, height above the ground, obstructions, interfering electronic devices, weather, and power output of the device
- Communicates with about 30 clients

How does WiFi Work? Laptop to Router

- Double check laptop connection to WAP – good, poor, no signal
- May need to reboot laptop and make the connection to the router again
- Especially if using a PCMCIA (Personal Computer Memory Card International Association) WiFi card, you may need to reboot

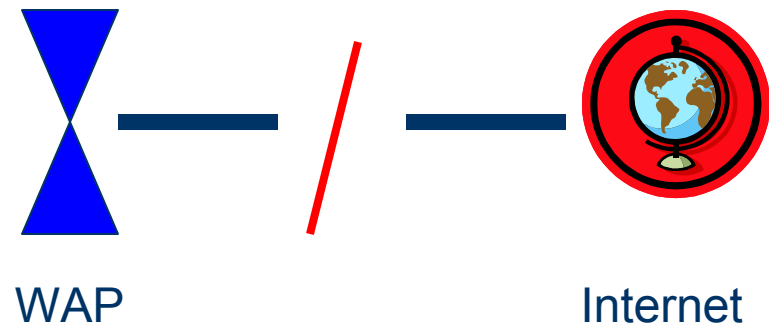


How Does WiFi Work

- Still no connection to the Internet
- Make sure your signal is strong
- Problem is with the WAP and is out of your control

How does WiFi Work? WAP to Internet

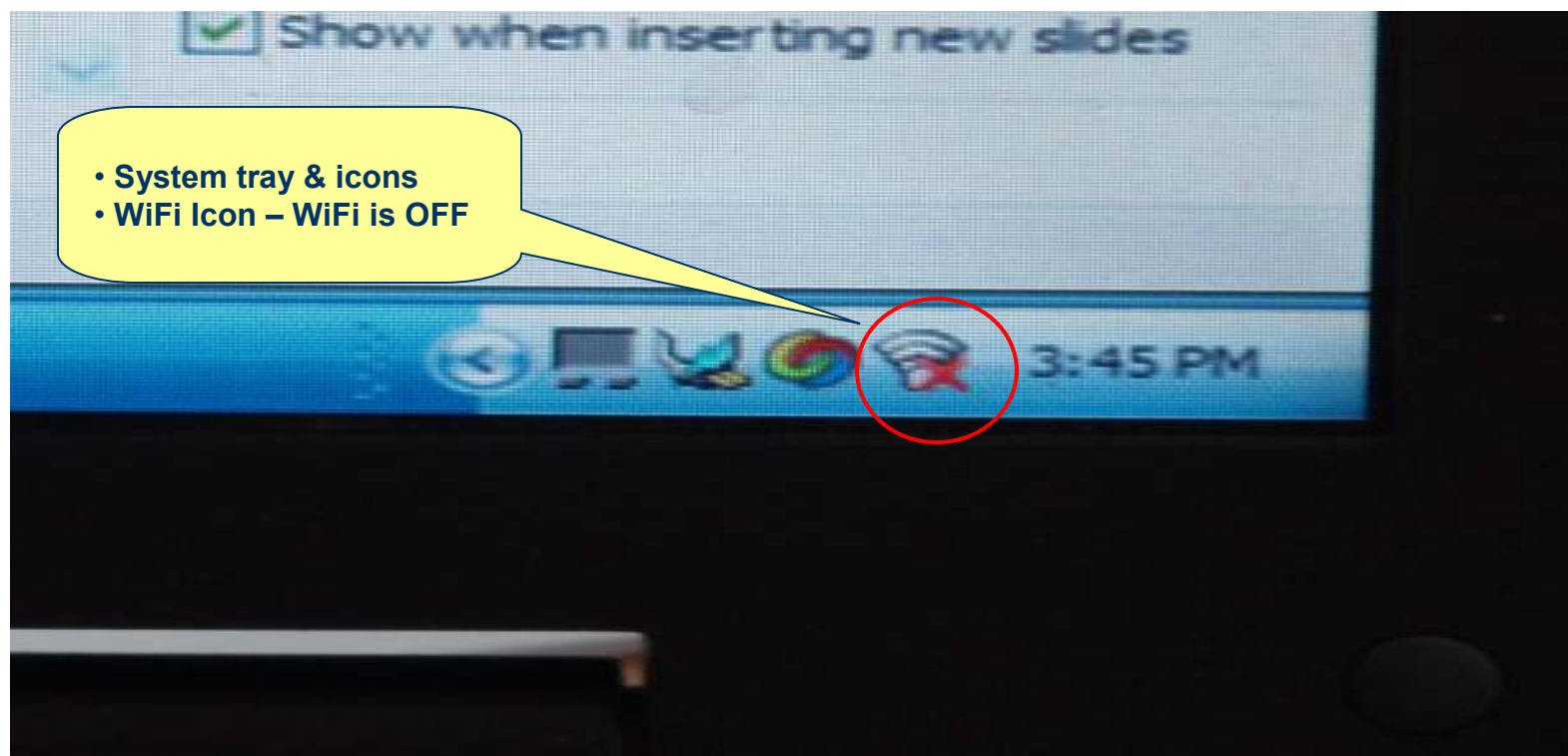
- WAP is not connected to the Internet
- Link to internet is not functioning
- WAP must be re-booted
- Internet Service Provider may have a problem
- NOT YOUR PROBLEM – Can't do anything about this



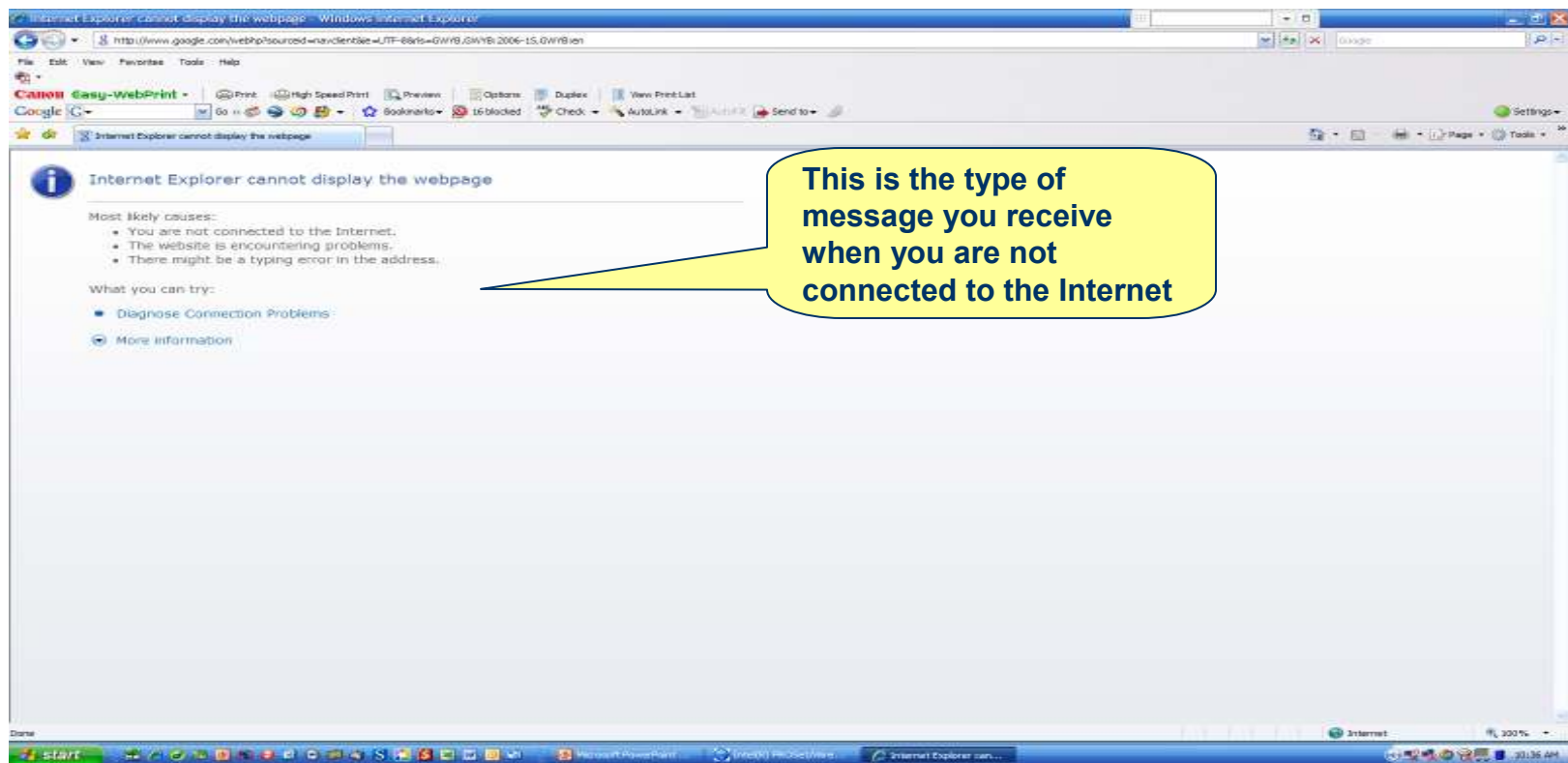
Why do You Need WiFi

- Check the weather for threats
- Send/receive email
- Check bank/stocks/financials
- Browse the Internet
- Pay bills

How do You Use WiFi – System tray



How do You Use WiFi – Wireless Adapter Signal



How do You Use WiFi – Turn On

- A button or a set of keys (Function + F2) will turn the WiFi on or off as you need it
- Once on, expand the WiFi signal icon that appears in the system tray by double clicking on the icon
- This will open a window where you can select a wireless connection

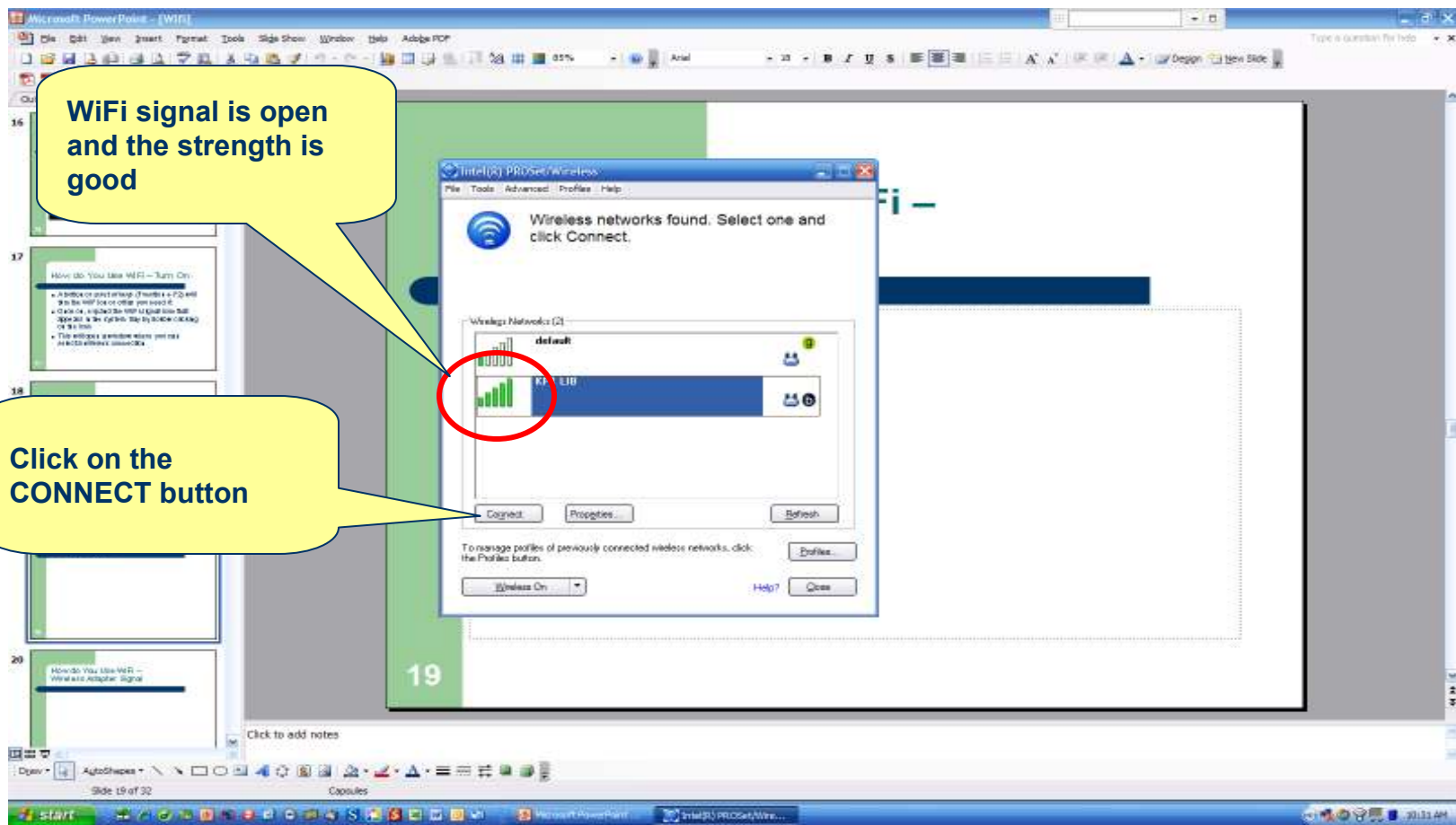
How Do You Use WiFi – WiFi Turned On

This shows the WiFi connection is secured and you can't connect

This shows your WiFi is turned on and looking for signals



How Do You Use WiFi – Finding a WiFi



How do You Use WiFi – You Are Connected

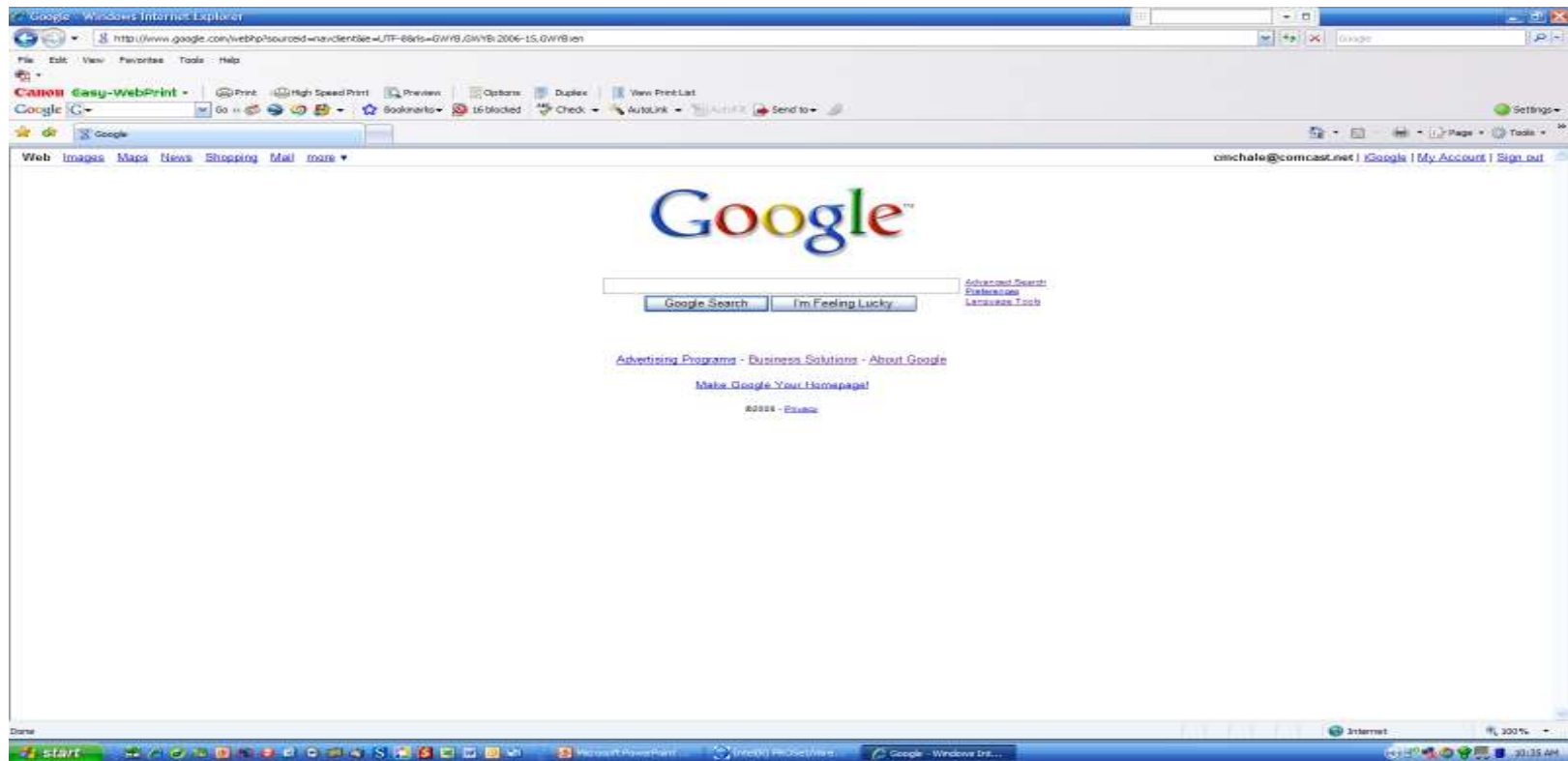
You are now connected

The screenshot displays a Windows XP desktop environment. In the foreground, a Microsoft PowerPoint window titled "Microsoft PowerPoint - [WiFi]" is open, showing a slide titled "How do You Use WiFi - You Are Connected". The slide content includes a yellow callout box with the text "You are now connected" and a list of bullet points: "• A better or worse range (Thanks a PC will do the work on other systems)", "• Check on signal strength (Quality of Service)", and "• The wireless connection may not be the best connection". The Intel PROSet/Wireless utility window is also open, displaying "You are connected to KP1 LIB" with network details: Network Name: KP1 LIB, Speed: 11.0 Mbps, Signal Quality: Excellent, and IP Address: 10.0.10.5. The Windows taskbar at the bottom shows the Start button, several application icons, and the system tray with the time 9:32 AM.

How do You Use WiFi – Turn On



How do You Use WiFi – You Are Connected to the Internet



How Do You Use WiFi - email

- Email program on your laptop, i.e. Outlook or Outlook Express
- Open email and connection to your email provider should work with no problem

How Do You Use WiFi - email

- Email program accessed on the Internet, e.g. AOL, MSN, Juno, Google email, Yahoo email,
- Make sure you are connected to the Internet
- Log on to your email

How Do You Use WiFi - Browsing

- Click on Internet Explorer
- When connected, browse the web
- Pay bills, get stocks, etc
- Close Internet Explorer when finished

How Do You Use WiFi – Ending the Connection

- Can leave WiFi turned on until you leave the area or access point
- Laptop can be turned off, placed on standby or hibernate with WiFi turned on
- When leaving the area, turn off WiFi (button or a set of keys) to save resources

Good WiFi Practices - Security

- Don't use public hotspots to do banking, credit card or other secure transactions
- WiFi is not secure
- Secure transactions via HTTPS:// sites
(hyper text transfer package secure)
- Note small lock on the status bar

Good WiFi Practices - Security

HTTPS:// (*hyper text transfer package secure*)

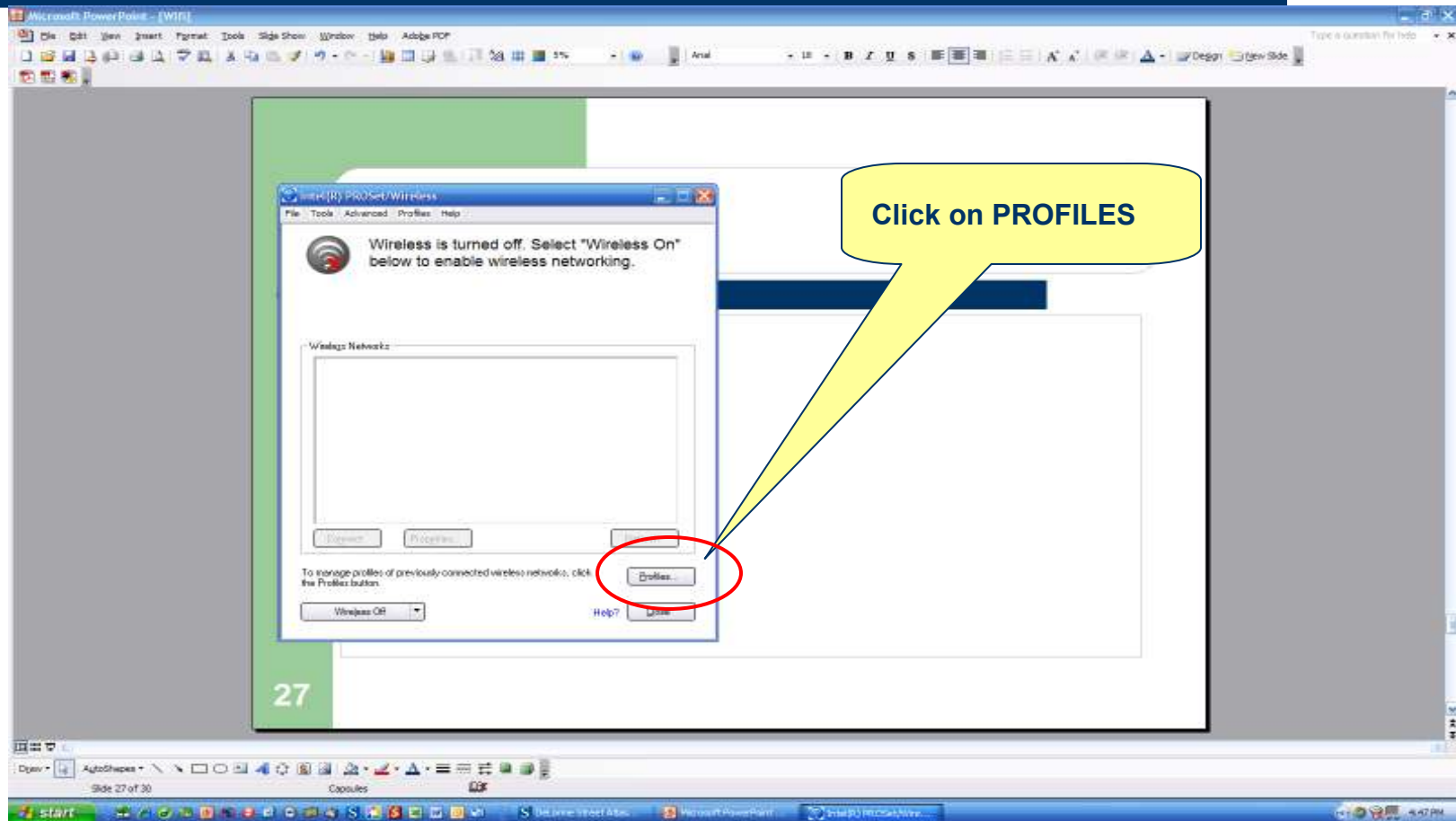
- Encryption and authentication transmission control protocol
- Protects the data in transit from eavesdropping; once it arrives at the destination it is only as safe as the computer it is on
- Example of transmitting the words *This is a test* would look like this when it is transmitted using https:

3867F7B3EBEA5B5501C1E3AD7403D8E1EF8C106E

Good WiFi Practices

- Turn off WiFi when not connected
- Constant searching uses resources
- Ask to connect to a another RV's WiFi
- Don't download video, massive amounts of pictures when using someone else's WiFi

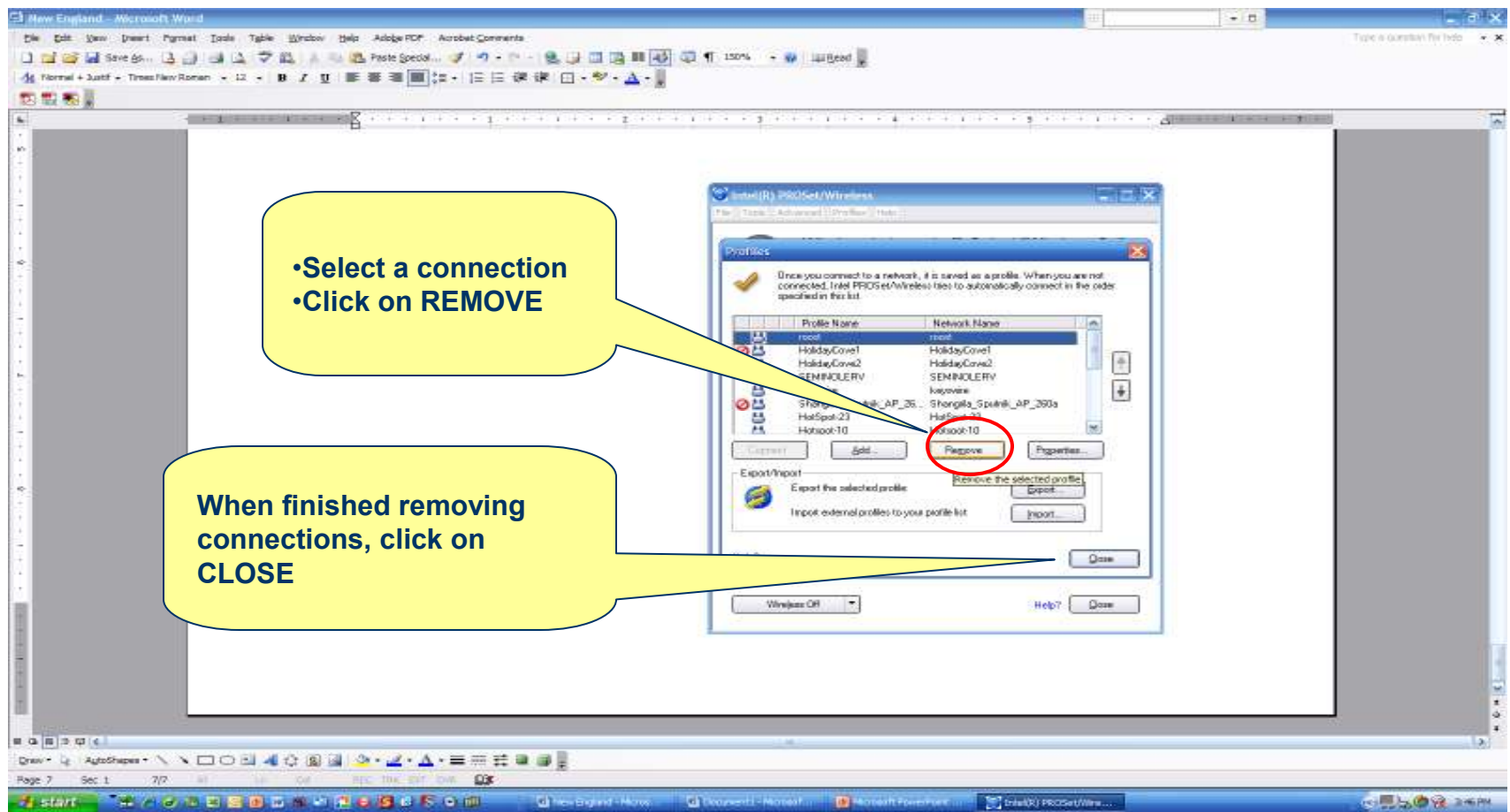
Good WiFi Practices – Remove Unwanted Profiles



Good WiFi Practices – Remove Unwanted Profiles

- Select a connection
- Click on REMOVE

When finished removing connections, click on CLOSE



Questions

- Questions, comments or other issues

A large green decorative shape on the left side of the slide, resembling a stylized letter 'C' or a bracket with a rounded top and bottom. It has a white cutout in the center.

Thank you!

Seminar on
www.wetrekmd.com

A thick, dark blue horizontal bar with rounded ends, positioned below the text.